

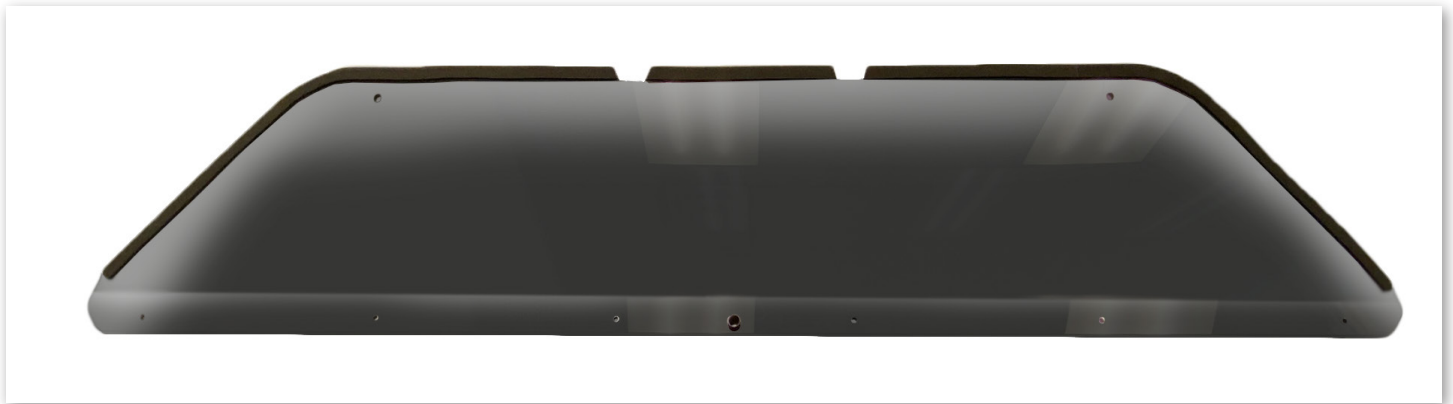
# MOTO ARMOR

## Instructions Full Glass can-am Maverick X3

- 4 – Universal Billet Clamp 1.875"
- 2 – Bolt 1/4-20 x 1/2"
- 2 – Bolt 1/4-20 x 2"
- 2 – Bolt 1/4-20 x 2.5"
- 4 – Flat Washer 1/4"
- 6 – Lock Nut 10/24
- 6 – Bolt 10/24 x 1/2"
- 2 – 1/8" x 1 Adhesive Foam (6")
- 1 – 1/8" x 1/2 Adhesive Foam (60")
- 6 – Rubber Vent Bumpers 3/16"
- 4 – Lock Washer



**STEP ONE** – Attach the billet mounts onto the approximate positions to the upper and lower roll cages shown in the above picture. Use the 2" long bolts on the lower clamps to hold them in place. Tighten the bolt enough to hold the clamp in place but still allow movement.



**STEP TWO** – The inside of the windshield frame will use two 6" pieces of adhesive foam. You will apply these on both sides of the inside frame. Center the foam between the bend and the gasket. The start of the foam will begin at the top edge of the frame.

**2.1** – The second foam application will be for the top visor. Place the visor flat on a table with the bend angled up. At this point remove the film from the top side only. Begin the foam at the bend and follow along the edge of the visor with the foam going straight over the two insets. Continue until you reach the other side of the bend. You will then come back and either rip or cut the foam along the two insets to open them up. (The adhesive on the foam is extremely strong if it is placed on a surface it will not release.)



**Lower Clamp Orientation**

**STEP THREE** – Carefully place the windshield onto the clamps on the roll cage. If necessary move the clamps to line up with the holes on the windshield frame. Use the included 1/2” bolts to loosely attach the windshield to the lower billet clamps.



**Upper Clamp Orientation**

**STEP FOUR** – Remove film from both sides of the visor and place over the main windshield lining up the bolt holes. Use the 6 smaller bolts and nuts to loosely attach the visor to the top of the windshield. Align the upper clamps to the holes on the visor and install the 2” bolts with washers. You can now tighten the small bolts and nuts. With the windshield in the correct position tighten the clamp bolts to lock the billet clamps in place.



**Approximate Bumper Location**

**STEP FIVE** – With the windshield now installed you have the option of installing the vent bumpers. This will eliminate any vibration or rattling that may be caused due to the contact between the vent and dash. Make sure that the dash is clean and dry. Open the vents from the inside. Take note of where the vents are contacting the dash. Slightly lift the vent off of the dash and place the bumpers. You can use more than two but that is all that is recommended.

## **PRO TIPS**

When installing bolts use a small amount of **blue** thread locker, such as Loctite. This will keep the bolts from backing out during use. Tinted polycarbonate can scratch easily. It is recommended to wait until you finish your ride to clean your visor. Use mild cleaners such as windex with a new, unused, micro fiber cloth. Paper towels will scratch the polycarbonate. Do not apply pressure during the cleaning process or you may scuff the visor.