



# Can-Am Maverick X3 Door Instructions

SKU: MA-X3-2-Door

For: Canam Maverick X3 2 Door Models 2017-2023

**IMPORTANT!!** Please read through instructions before beginning installation to become familiar with the different steps and order of steps.

## Hardware Kit Components

QTY	Description
6	3/8" X .75" Flange Bolts
6	1/4" X .75" Button Head Bolts (Black SS)
10	1/4" Flat Washers (Black SS)
4	1/4" Nylock Locknuts
4	M5 X 12mm Button Bolts SS
4	M5 Locknuts
13ft	Large Bulb Seal (adhesive backed)

## Small Parts

QTY	Description
2	Release Handles
2	Latch Mount Plate
2	Hinge Mounts (Left and Right)



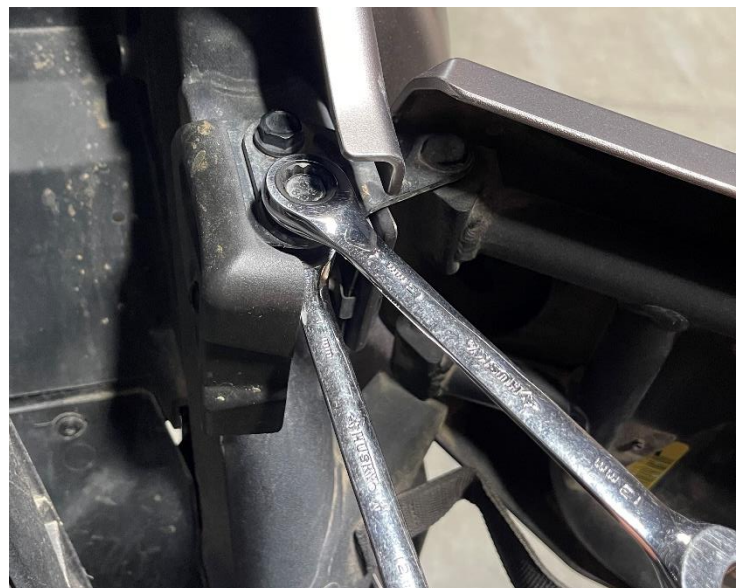
## Step 1. Remove factory doors and latches

Disconnect limit strap from door only by drilling the head off of the Rivet (leave other end attached to main frame of X3). You might need to hold the rivet from spinning with vise-grips. Strap is re-used on new doors.

Use a 13mm socket or wrench to remove the top two bolts holding the top hinge pin on. (The nut that is welded on can break loose. Use a 12mm open end wrench to hold nut.) Pin bracket is re-used on new doors.

With both bolts remove, pivot pin bracket out of the way and lift door off bottom pin.

Remove latches from factory doors using a 4mm allen key, or T30 torx (depending on year). Drill out rivets on latch to remove the pull strap. Use vise-grips or plyers to hold rivet from spinning while drilling.



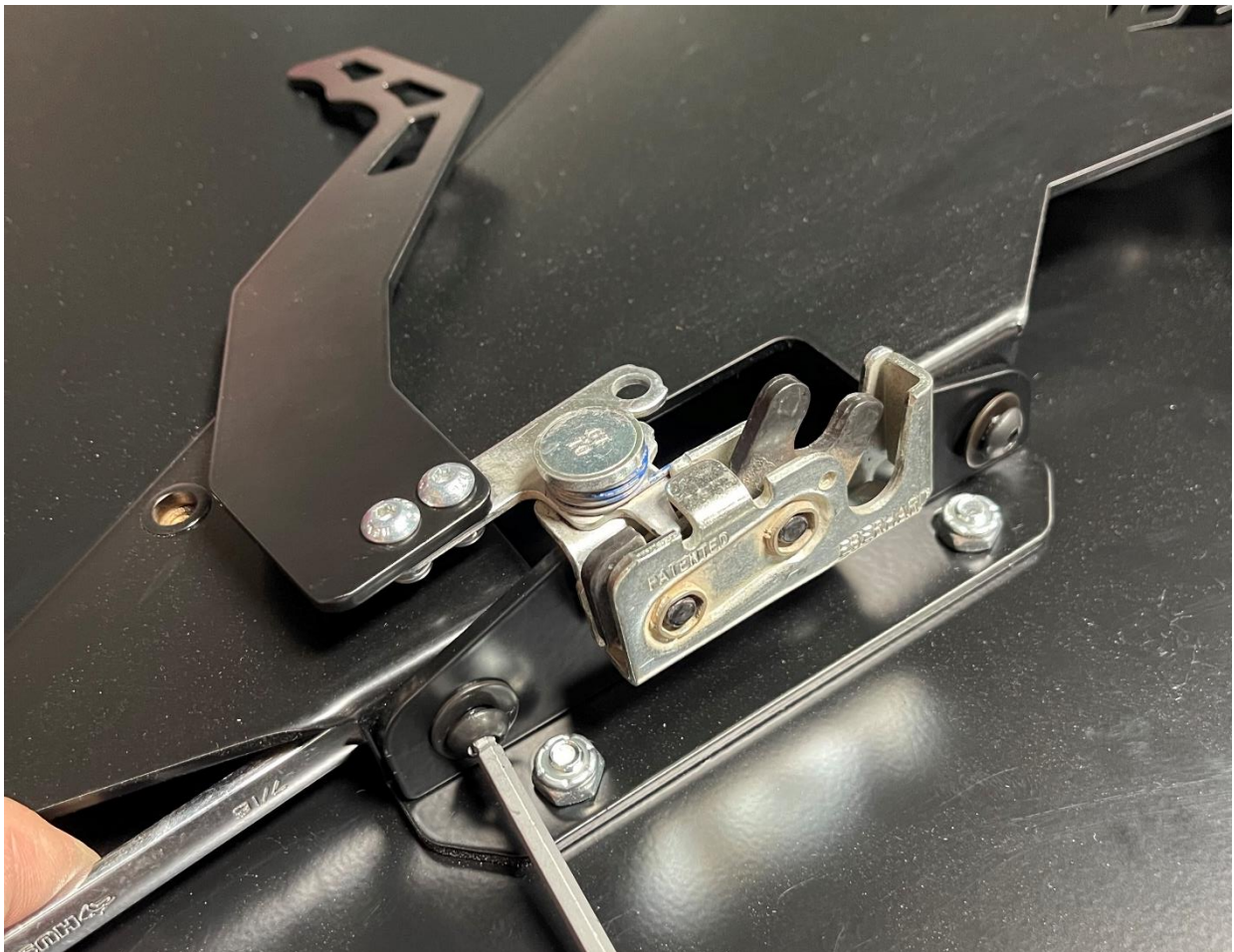
## Step 2. Install Latches and Handles on new doors

Using the 5mm bolts and nuts, install the new release handles onto the latches as shown in picture. (Driver side shown) Use a 3mm Allen on the bolt and an 8mm wrench on the nut.

Re-use the factory latch bolts to attach the latch mount plate as shown in the picture. Position the bolts in the middle of the slot to allow later adjustments.

Install latch assembly onto new door using two 1/4" bolts with flat washers and lock nuts as shown in picture below. Use 5/32 allen on bolt head, and 7/16" wrench on nut. It can be difficult to hold nut in place to start bolt. (Door skin and frame can be disassembled to make this step easier if needed)

Leave hardware slightly loose until final adjustments are made with door installed.



### Step 3. Install Hinge Mount onto X3

Find the driver side hinge mount (reference picture below). Flat side will face inward and longer part of hinge will be upward.

Test fit factory hinge pins into bronze bearings. The fit should be tight, but able to push in by hand or with a light tap of a hammer. The pins may need to be cleaned off by hand with sand paper. Pins clean up very easily by hand with sand paper. Do not use any type of powered sander or grinder.

Re-use the plastic washers that were on the pins and install the hinge mount onto the X3 as shown below. Reuse the top two bolts and install the top pin bracket back on X3.



#### Step 4. Install door onto X3

Open Hinge mount to approximately 45° from X3. Carefully slide door over Hinge mount into place. Use three of the 3/8" Flange bolts into the three slots and thread into hinge mount. Position door so that the bolts are close to center of each slot and tighten enough to hold door in place.

**From this point be careful opening/closing and moving door around as it may contact painted plastics until fully adjusted.**

Use one 1/4" bolt and washer to install limit strap into threaded hole as shown. This will keep door from opening too far and damaging plastics and the door. (Use blue thread lock on this bolt)

#### Final Adjustments:

Start by getting door to shut. Carefully close door to see where latch and door need adjustments.

Ideal door position is back as far as you can without hitting rear plastics as door opens, and the front edge height has clearance so the top edge clears the front plastics. Also check general alignment with plastics all around. Every machine is slightly different so adjustments will vary by machine.

Use the 3 large 3/8" bolts to get door position close. These bolts will give you forward and backward adjustment as well as some up and down adjustment.

The factory latch bolts will adjust the latch up and down with some in and out adjustment.

The 1/4" latch plate bolts and nuts will adjust in and out to adjust how tight you want the door to close.



### Step 5. Install Bulb Seal

(This step can be performed before door installation but we recommend doing it after as it will tighten up the door and can make installation a little more difficult.)

Install adhesive bulb seal on the INSIDE of the door around the edge as shown in the picture below.  
(Highlighted in Red)

