



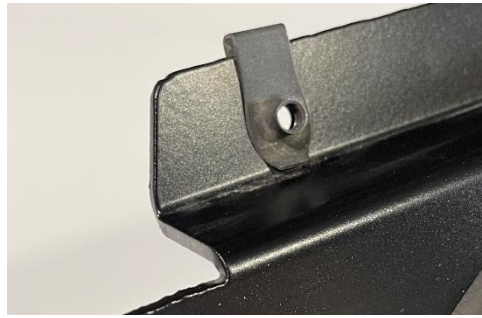
RZR Trail / Trail S Glass Windshield Install Instructions

Hardware

- 2 – 1.75" Billet Clamp
- 2 – 1/4" X 2" Bolt
- 2 – 1/4" X 3/4" Bolt
- 2 – 1/4" X 1/2" Bolt
- 6 – 1/4" Flat Washer
- 6 – 1/4" Lock Washer
- 2 – 1/4" Clip-Nuts

SKU: MA-RZTRL-WS-GLS-BLK-Y

Fits: 2021 – 2022 RZR Trail /Trail S

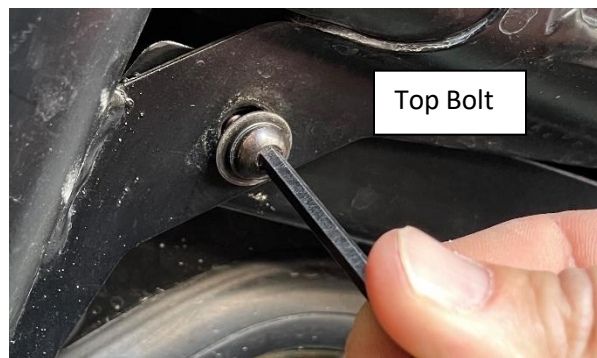


STEP 1. Install Clip-Nuts onto the top of the windshield frame as shown in pictures above, (this step may have been completed before shipping) The threads should be on the front side of the windshield.

STEP 2. Place two lower billet clamps on cage as shown in pictures with the threaded hump facing toward the front of the machine. Use the 2" long bolts with a lock washer and flat washer and loosely secure the clamp in place by inserting the bolt from the back into the threaded hole toward the front.



STEP 3. Place windshield on RZR and secure with provided hardware. Use the .75" long bolts (with flat washer and lock washer) on the top by bolting from the inside of the rZR through to the clip-nuts. Then use the .5" Long bolts (with flat washer and lock washer) on the bottom mounts bolting from the front into the threaded humps on the clamps.



After all bolts have been started loosely, adjust windshield position and tighten all mounting hardware.

Wiper Install: Install wiper hardware as shown in picture.

Remove plastic cover before installing by pulling it away from wiper arm. The rubber washers should be contacting the frame on both sides. Clip plastic cover back on after install is complete.

