

# \*\*\*Hardware / Instruction Update\*\*\*

For: MA-RZPRO4-BLK (Pro 4 Aluminum Doors)

Your hardware may include the following updated FRONT TOP door mounts. They are identified by the letter "F" cut into the parts. These are for the Front doors only used in step 12 of the instructions. These new Front mounts are wider than the previous (and rear) mounts and may not need any spacers.

Updated Front Top Door Mounts. Step 12 of instructions.



Rear Top Door Mounts. Step 7 of instructions.





# RZR PRO 4 Door Install Instructions

SKU: MA-RZPRO4-BLK

For: RZR PRO XP 4/ RZR TURBO R 4 / RZR PRO R

**IMPORTANT!!** Please read through instructions before beginning installation to become familiar with the different steps and order of steps. There are many points of adjustment on the doors and mounting points. Make small adjustments and carefully check fitment to avoid damage to UTV or doors.

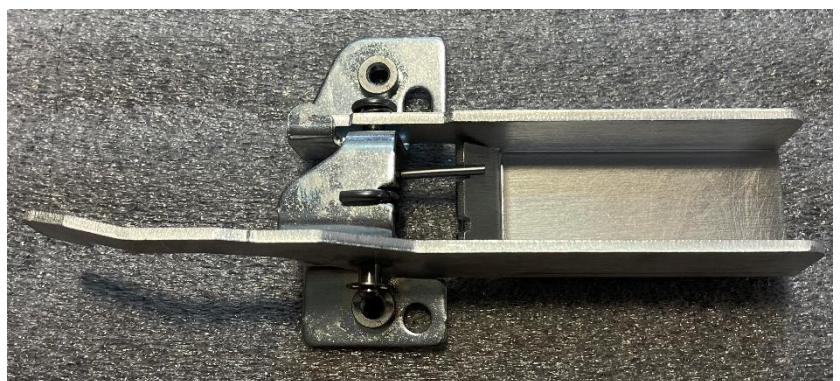
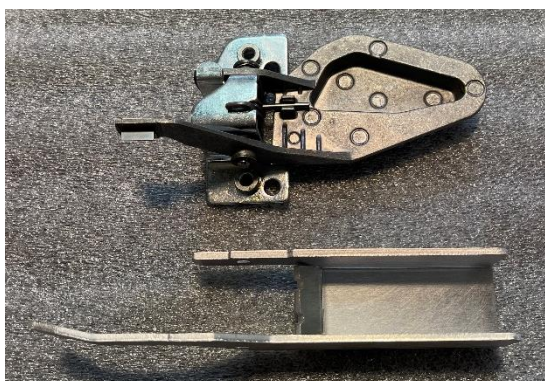
Hardware and Parts List are last 2 pages of Instructions.



Instruction pictures are of driver side install only. It's recommended to complete one side then install the other side. The rear door should be installed before the front door because it can be opened and completely out of the way for front door installation.

**STEP 1. Remove Factory Doors including hinges.** Some models (PRO-XP/PRO-R) will use a 13mm socket or wrench to remove the hinge bolts while others (TURBO-R) will use T40 Torx/ 6 point star bit. After removing doors, remove the factory latches and push handle assemblies from the doors. Use T27 and T40 bits to remove the door skins, and use a T30 bit to remove the push handles. Remove Latches with an 8mm socket or wrench. Keep the front latch/handle parts separate from the rear. Also remove the rubber bump stops from the rear doors as they will be reused.

**STEP 2. Install new push handles on stock brackets from rear door push handles.** (This step is for rear latches only) **The passenger side LATCH (not push handle) will be used on the driver side rear door and vise-versa.** Lay out the stock and new parts as shown in picture. Carefully remove C-clip from pin and slide pin out. Place new handle in bracket and insert pin back in place and secure with C-clip. Aligning pin can be a little difficult because there may be a little pressure from the spring.



Pg. 1



**STEP 3. Install push handle on Rear Driver side door.** This step requires disassembly of new door to access the inside of the frame to install handle assembly. Use a 7/16" socket or nut driver to remove the nuts holding door frame to door skin. A 7/16" end wrench may be necessary for the nuts inside the c channel. A magnetic nut driver and extension makes accessing the top 3 nuts easy as shown in the picture. Not all studs will have nuts on them as they were only installed for shipping.

When nuts are removed, pull the lower steel frame off the door first. Then lift the aluminum box frame off by pulling up on the bottom edge first and rotating it up and lifting off the top studs. (Reverse this action for re-installing.)



Install push handle assembly using the factory Torx (T30 Bit) head screws as shown in picture. Final position of latch handle can be adjusted later.

**STEP 4. Assemble rear door.** With push handle installed in frame, assemble door by installing top box frame first, then lower steel tube frame. Put nuts on all studs during assembly. Use 4 of the included 1/4" bolts with lock washers and flat washers in the two holes at the front of the door, and the two holes in the top of the C channel into the aluminum box frame.

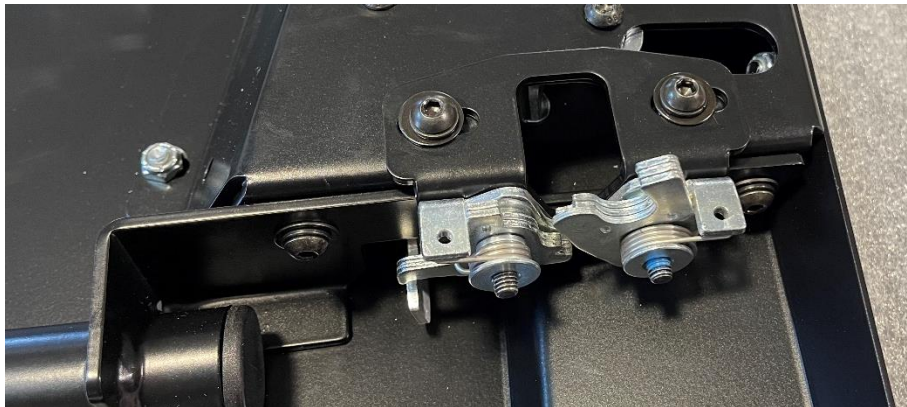




**STEP 5. Install Rear Latch.** Install rear latch onto latch bracket as shown in the pictures using the factory latch bolts (8mm wrench or socket). The latch position on bracket is adjustable. **Position the latch on bracket so that the inside edges (where the striker pin will go) are flush with each other.** If the black bracket is sticking into this area, it may keep the door from latching all the way.



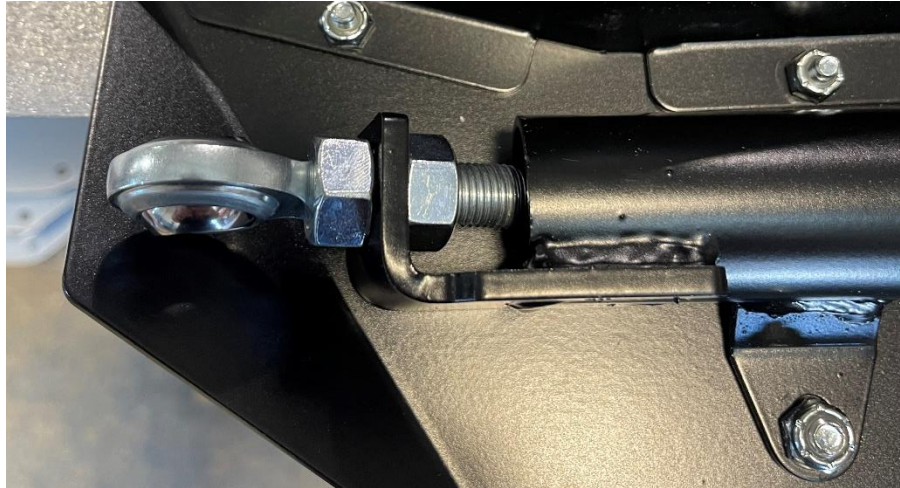
Install latch and bracket onto the door using 2 included  $\frac{1}{4}$ " bolts with lock washer and flat washer on each. There is adjustment up and down on the brackets slotted holes. This will need to be adjusted when installed onto UTV. Test handle to latch alignment by closing latch with your fingers and pushing handle to see if it releases latch.



**STEP 6. Install rod end hinges.** Find the Left Rod End Bracket. Install Rod end in bracket by installing one  $\frac{7}{16}$ " nut on rod end, then insert rod end into holes as shown in pictures and install second nut to hold it in place. Install bracket on door as shown in picture using the round head  $\frac{3}{8}$ " bolts.



Install second rod end in slotted hole at the bottom of the door frame as shown in the picture. Leave rod nuts hand tight for later adjustment.



**STEP 7. Install mounting brackets on UTV.** Using the factory bolts, mount the lower bracket as shown. Position the mount so that the bolts are in the middle of the holes. On typical install no spacers are used on this mount.

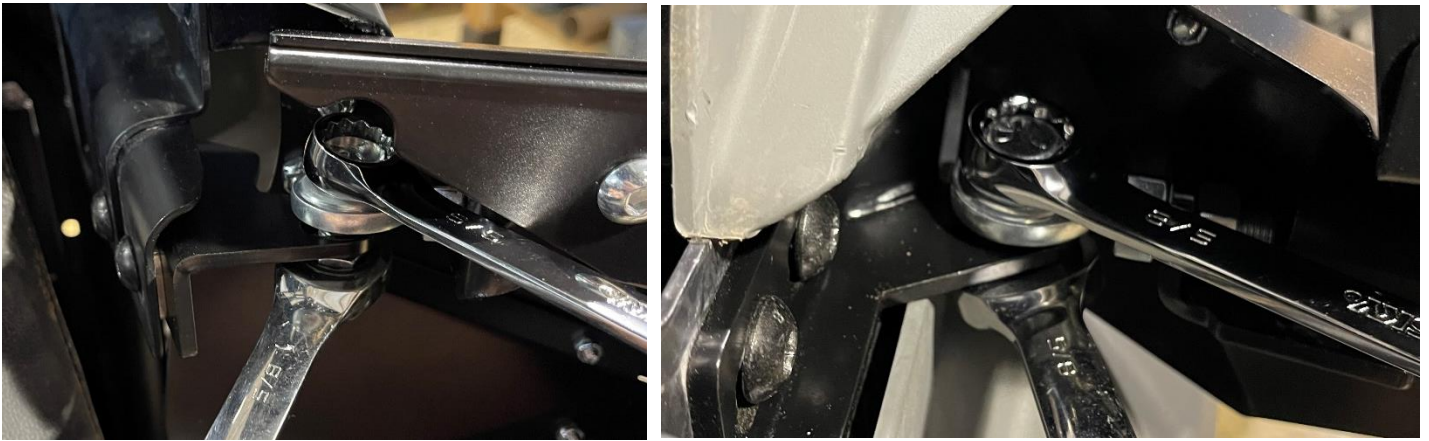


Install top rear mount as shown using the factory bolts and supplied flanged M8 nuts. It's recommended to put the bolt head on the inside of the UTV, and the nut on the outside. This is helpful when adjusting if you have the TURBO R style TORX head bolts that are tough to reach from the outside. On typical install no spacers are used on this mount.



**STEP 8. Install back door onto UTV.** Using two supplied 7/16" bolts and nylock nuts, carefully install the door onto the mounts. (THIS IS MUCH EASIER WITH TWO PEOPLE.) Be careful as the door may contact the rear plastic near the top and bottom during this step. Use two 5/8 end wrenches to tighten the bolts. Hold door so that the mounting bolts are in the outer most position of the slots on the mounts when tightening. It may be necessary to loosen one or both of the mounts to allow the rod end hinges to bolt tight against the mounts.

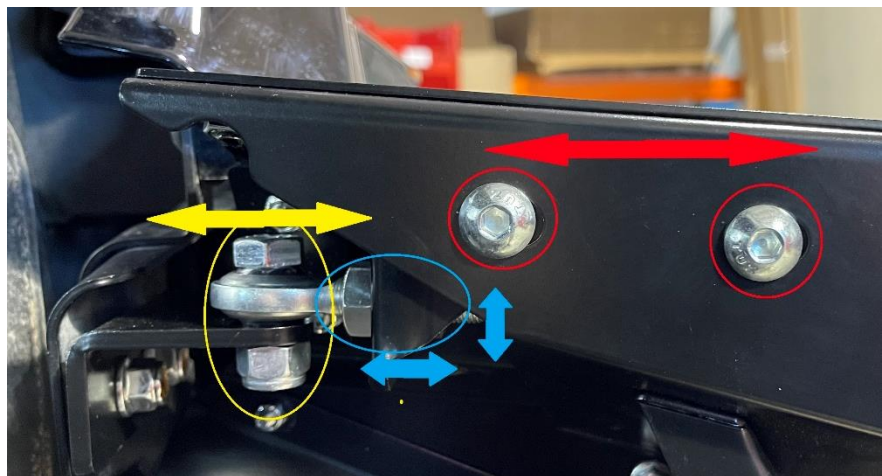




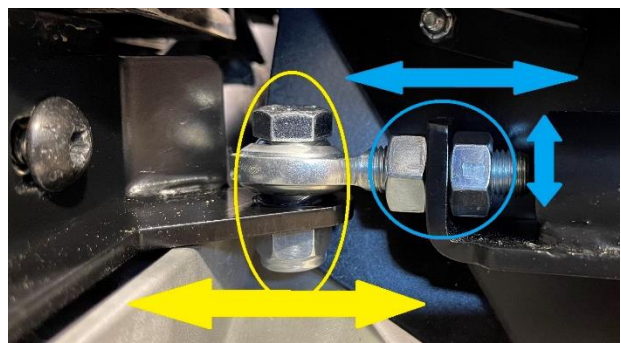
When 7/16" bolts are tight, snug up the other mounting bolts so the door does not sag when not held. You are now ready to start adjusting the door.

There are several points of adjustment. The goal is to get the rear door to open and close without rubbing the plastics at the back or below the door. In general, you want the rear door back as far as possible without plastic interference. Once this adjustment is close, leave door open and continue to the front door install. Final adjustment will be made with both doors are installed. Below are the adjustment points and movements.

**Round head Bolts** (RED in image below) that hold rod end bracket at top of doors (7/32 hex/Allen key) – The holes are slotted to allow forward and backward movement at top of the door. This is a quicker and easier adjustment then using the rod end nuts on the top mount. Adjust these before using the rod end nuts for forward and back adjustment.

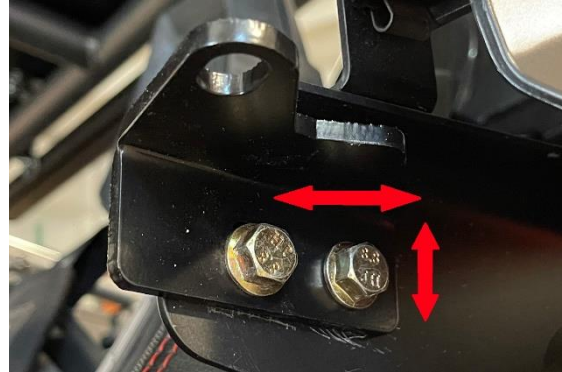


**Rod end nuts** (11/16" end wrench BLUE) - Use these to adjust forward and backward top and bottom independently. You can also adjust the door up and down with these nuts because the holes are slotted. If the top and bottom nuts are both loose, the door will settle at the bottom of these slots. Make sure to lock the rod in place by tightening nuts after adjustment.



**7/16" Bolts** (hinge pin bolts 5/8" end wrenches YELLOW IN IMAGE) - Loosening these bolts will allow movement inward in the slots. This adjustment may be used to move the door inward to help clear the rear plastics when opening.

Mounting bracket bolts (factory bolts that mount to UTV, 13mm or T40 Torx) – Loosening these bolts will allow front to back and up and down movement.



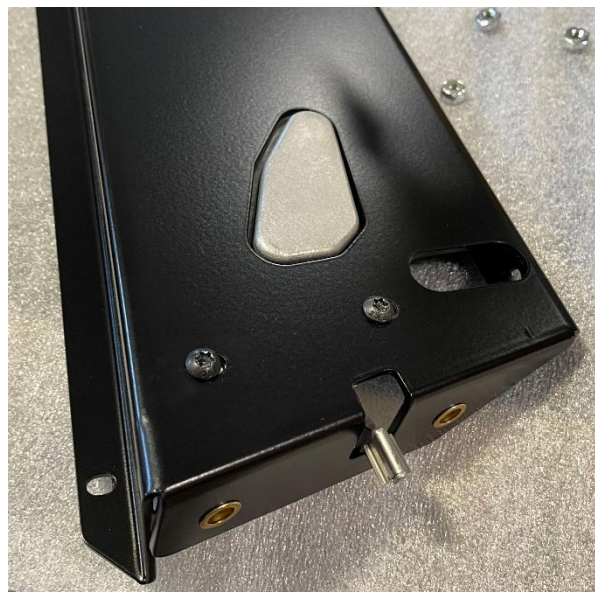
**Mount Spacers** – These spacers will add outward adjustment if needed. Typical installs don't need spacers on rear door mounts



**Latch Adjustment.** Adjust rear latch by loosening the two bolts that hold the latch in place. This will allow up and down movement to align to striker. Handle may need to be adjusted after latch has been adjusted.

**STEP 9. Install push handle on front door.** Disassemble frame from door skin using the same tools as the rear door used, (7/16" wrench and nut driver). Take the steel tube frame section off first, then take off the aluminum box frame second. (Use the same motion as the rear door: lift the bottom edge of box frame off first then rotate up and lift off upper studs).

Install the push latch assembly using the factory bolts (T30 TORX BIT) as pictured. Some final adjustment may be needed during door/latch install.



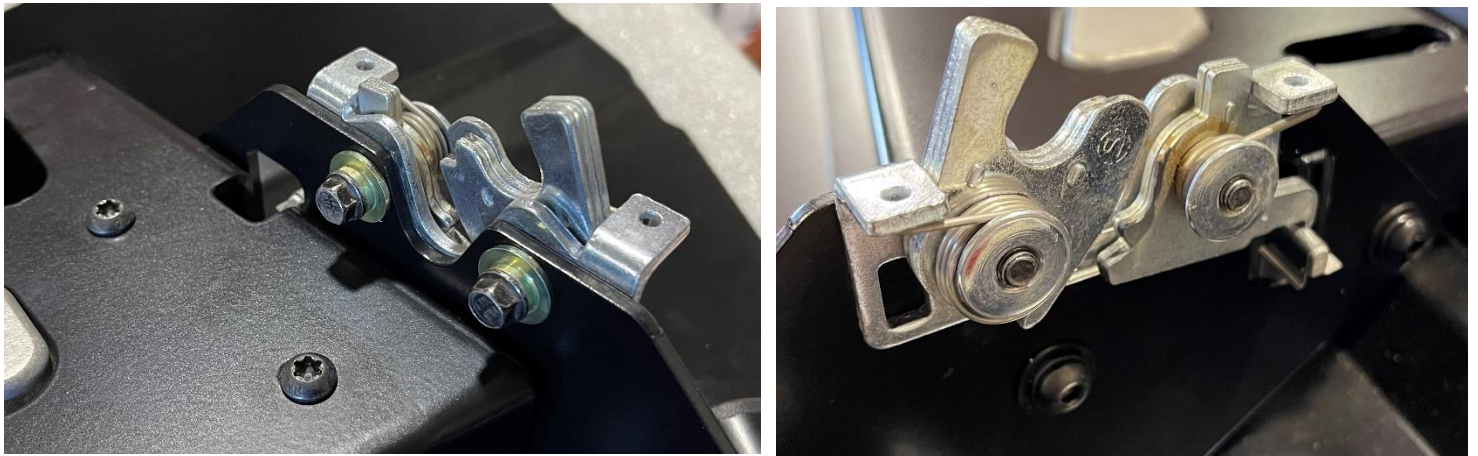


Re-assemble door skin to frames starting with upper box frame section. When placing lower tube frame section you must slide the front bracket over the latch handle piece that sticks out before it will fit back on door skin. Install supplied  $\frac{1}{4}$ " flange nuts on all studs on both frame sections.

Use 4 supplied  $\frac{1}{4}$ " bolts with lock washers and flat washers to fasten upper and lower frame sections together at the front joint, and at the rear brace.



**STEP 10. Install front Latch.** Install front latch as shown using factory bolts (8mm socket) and spacers from factory rubber dampers or use flat washers as spacers. The bolt should not protrude out the other side of the latch more than  $\frac{1}{16}$ " or it may interfere with striker. Check alignment of push handle to latch by closing latch with hand to make sure it releases latch.

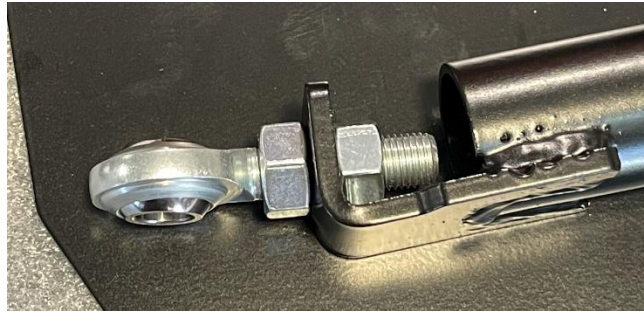


**STEP 11. Install rod ends on front door.** Install rod end in front door rod end bracket as shown below. Install first nut all the way onto threaded shaft, then slide through bracket and install second nut. Use two round head  $\frac{3}{8}$ " bolts to install bracket into door.





Install bottom rod end as shown in picture



**STEP 12. Install front mounting brackets on UTV.** Install the upper bracket as shown using new supplied 3/8" flange bolts and flange nuts. Position the bolts with the bolt head on the inside of the UTV and the nut on the outside. **USE 2 ALUMINUM SPACERS on this bracket.**



Use 2 Spacers on this mount.



Install the bottom brackets using the factory bolts. Position the mount with the bolts centered in the square mounting slots. Typical install does not require spacers for this mount.



**STEP 13. Install front striker.** Remove factory front door striker using a T30 torx bit. These bolts can often be tight so we suggest using a ratchet with a T30 bit to help avoid stripping the bolt. Install new striker as shown in picture, re-using factory bolts. Don't tighten all the way as this will likely need adjusting during door install. Striker can be spaced out with washers if needed for alignment.



**STEP 14. Install Front Door on UTV.** Using two supplied 7/16" bolts and nylock nuts, carefully install the door onto the mounts. (THIS IS MUCH EASIER WITH TWO PEOPLE.) Use two 5/8 end wrenches to tighten the bolts. **Hold door so that the mounting bolts are in the outer most position of the slots on the mounts when tightening.** It may be necessary to loosen one or both of the mounts to allow the rod end hinges to bolt tight against the mounts.



Adjustment points are the same on the front door as the rear. Follow a similar procedure to tighten and adjust front doors so that the front top of the door lines up with the top of the front fender. Adjust doors so that there is approximately a 1/4 inch gap between front and rear doors. This may take many adjustments to both front and rear doors and all latch points.

**STEP 15. Install rubber bump stops on front and rear door.** The factory rear bump stop is re-used on the new rear doors. This bump stop adds tension in the door to minimize rattling, and it helps position the alignment of the bottom of the door. You can install the bump stop in different ways to add more tension and alignment.

**Default install of rear bump stop:** Insert bump stop into hole on rear door frame as shown.



**Optional install of rear bump stop:** If you need more tension or you want to push the bottom of the door out slightly, install the bump stop by inserting a supplied 1/4" bolt through the bump stop and bolt it on with a supplied nylock nut. You can add washers for more tension.





**Install Front door bump stop:** Install included front bump stops to latch as shown using small 4-40 bolts and nylock nuts. Insert the small bolt into the large opening on the bump stop and into small hole at top of the latch. Install small nut on back side of latch. Use a 1/16" hex/Allen key on the bolt, and 1/4" wrench or socket on the back. Tighten till snug.



**Final Steps.** After final adjustments have been made, check all bolts and nuts to make sure they are all tight.

**Bulb Seals.** There are two sizes of adhesive backed bulb seal included. Installation of seals can vary depending on desired result of the installer. A typical install would place the large bulb seal along the inside edge of doors along the bottom and long front vertical edges. The small seal is ideal along the top front edge because it is easier to put along the bends.

Hardware List. (Some hardware may already be installed on door assemblies.)

QTY	DESCRIPTION		QTY	DESCRIPTION	
8	7/16 Rod End		16	7/16 NUT (non locking)	
8	7/16" X 1.25" BOLT		8	7/16 Nylock Lock Nut	
4	3/8" X 1.25" Flange Bolt		4	3/8" Flanged Lock Nut	
8	3/8" X .75" Round Head Bolt		4	M8 Flanged Lock Nut	
22	1/4" X .75" Round Head Bolt		36	1/4" Serrated Flanged Lock Nut	
2	4-40 X .75" Round Head Bolt		2	1/4" Lock Nut	
30	1/4" Flat Washer		2	4-40 Lock Nut	
22	1/4" Lock Washer		2	.75" Long Bumper	
12 FT.	Large Bulb Seal		4	1.25" Tube Caps (Installed)	
6 FT.	Small Bulb Seal				



Door brackets and small parts.

Left Rod End Bracket QTY 1



Right Rod End Bracket QTY1



Top Mount A QTY 2



Top Mount B QTY 2



Bottom Mount R QTY 2



Bottom Mount L QTY 2



Driver Striker QTY 1



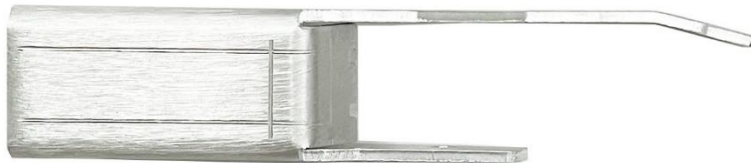
Passenger Striker QTY 1



Front Rod End Bracket QTY 2



R Push Handle QTY 1



L Push Handle QTY 1



Rear Latch Slider QTY 2



Mount Spacer QTY 8

