



Moto Armor Door Skins for RZR PRO 2 Seat

Hardware

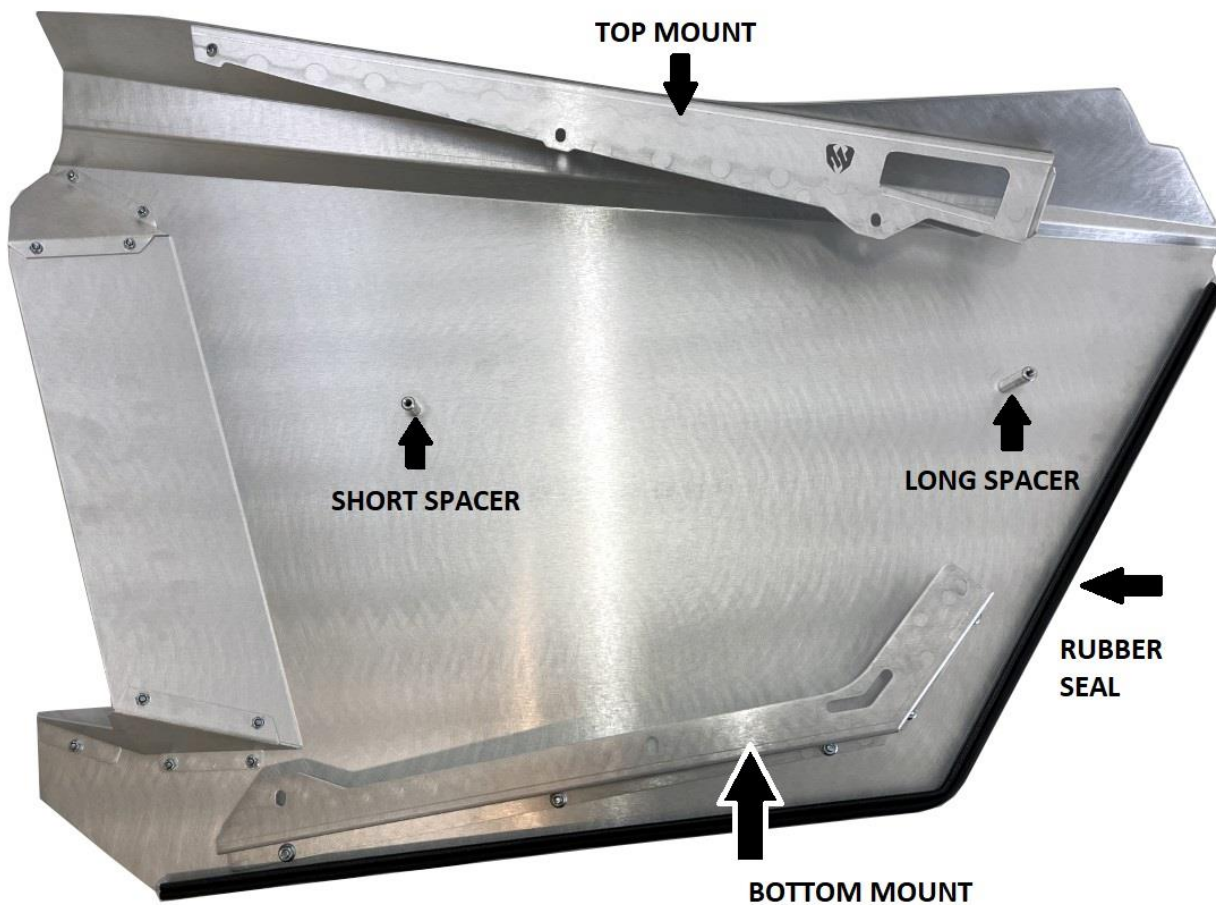
SKU: MA-PRO2-BLK Fits: 2020 – 2022 RZR PRO XP, PRO R, TURBO R (2 seat only)

QTY	Description
16	1/4-20 X 5/8" Button Head Bolts (Black SS)
24	1/4-20 Serrated Lock Nuts
24	1/4 Flat Washers
2	4-40 x .75 bolts
2	4-40 Nylock nuts
6	1/4-20 Clip nuts (Short)
2	2.25" Aluminum spacers (LONG)
2	1.25" Aluminum Spacers (SHORT)
2	13/32" Tall Rubber Bumps
8 FT	Side Bulb edge trim (1/8" edge) FT

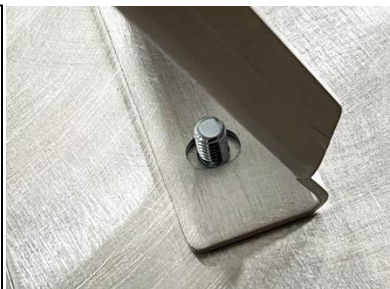
Please read through entire instructions to become familiar with steps before beginning install.

STEP 1. Remove factory plastic door skins from door frames. This can be done with the frames remaining on the machine. Use a T40 for most of the bolts and a T25 for the two small screws that hold the aluminum bracket at the bottom back corner.

STEP 2. Assemble doors as shown below. Lay a blanket or towel down on a table or flat surface to prevent scratching the doors.



When installing **TOP MOUNT**, position stud in the center of the mounting slots as shown in picture. (Can be adjusted later to adjust top of door in or out slightly for alignment.)



Install rubber seal with bulb on outside edge of door as shown. Seal can also be installed after doors are installed.



STEP 3. Mount door onto factory Frame. Install 3 clip-nuts onto the top edge of door frame as shown below. Make sure the threaded side is on the outside of the frame.



Carefully place door skin on factory door frame and slide the top mounting bracket over the top edge of frame. First insert two 1/4" bolts with washers into the two threaded spacers. Start with these two bolts because they have the least amount of adjustment. Leave bolts loose enough to be able to move skin to help align other bolts. (Use a 5/32 Hex/Allen key on these bolts)

Install the top three bolts with washers into the top three Clip Nuts. Don't tighten any of the bolts until the rest have been started.

Install the remaining 3 bolts in the bottom mount using serrated locknuts on the back side. Only install flat washers on the bolt side.



Install the two rubber bumpers on the latches as shown in the last picture. Use the two smallest screws and locknuts for this step. Use a 1/16" hex/allen bit on the bolt head, and a 1/4" end wrench on the nut side. Install in the small hole at the top of the latch. There may be a factory bumper on the latch that you can just pull out.

Adjust doors by loosening the factory hinge bolts (T40 bit). Adjust striker by loosening the bolts (T30). It may be helpful to space out the striker with washers on some installs.

